

BALDOR® • RELIANCE 

Product Information Packet

JSL325A

.5HP,3450RPM,1PH,60HZ,56Y,3416L,OPEN,F1

Part Detail							
Revision:	K	Status:	PRD/A	Change #:		Proprietary:	No
Type:	AC	Elec. Spec:	34WGR049	CD Diagram:	CD0203	Mfg Plant:	
Mech. Spec:	34M228	Layout:	34LYM228	Poles:	02	Created Date:	05-09-2013
Base:	N	Eff. Date:	11-12-2018	Leads:	5#18,1#16 #1TH		

Specs			
Catalog Number:	JSL325A	Inverter Code:	Not Inverter
Enclosure:	OPEN	KVA Code:	G
Frame:	56Y	Lifting Lugs:	No Lifting Lugs
Frame Material:	Steel	Locked Bearing Indicator:	Locked Bearing
Output @ Frequency:	.500 HP @ 60 HZ	Motor Lead Quantity/Wire Size:	5 @ 18 AWG
Synchronous Speed @ Frequency:	3600 RPM @ 60 HZ	Motor Lead Exit:	Terminal Panel Or Lead Hole
Voltage @ Frequency:	230.0 V @ 60 HZ	Motor Lead Termination:	Flying Leads With QC
	115.0 V @ 60 HZ	Motor Type:	3416L
XP Class and Group:	None	Mounting Arrangement:	F1
XP Division:	Not Applicable	Power Factor:	69
Agency Approvals:	CSA	Product Family:	General Purpose
	UR	Pulley End Bearing Type:	Ball
Auxillary Box:	No Auxillary Box	Pulley Face Code:	Other
Auxillary Box Lead Termination:	None	Pulley Shaft Indicator:	Ext Thread & Tapped Hole
Base Indicator:	No Mounting	Rodent Screen:	None
Bearing Grease Type:	Polyrex EM (-20F +300F)	RoHS Status:	ROHS COMPLIANT
Blower:	None	Shaft Extension Location:	Pulley End
Current @ Voltage:	3.300 A @ 230.0 V	Shaft Ground Indicator:	No Shaft Grounding

	4.400 A @ 208.0 V	Shaft Rotation:	Fixed Opposite Standard
	6.600 A @ 115.0 V	Shaft Slinger Indicator:	Shaft Slinger
Design Code:	-	Speed Code:	Single Speed
Drip Cover:	No Drip Cover	Motor Standards:	NEMA
Duty Rating:	CONT	Starting Method:	Direct on line
Electrically Isolated Bearing:	Not Electrically Isolated	Thermal Device - Bearing:	None
Feedback Device:	NO FEEDBACK	Thermal Device - Winding:	None
Front Face Code:	Terminal Panel	Vibration Sensor Indicator:	No Vibration Sensor
Front Shaft Indicator:	None	Winding Thermal 1:	Automatic Thermal Overload
Heater Indicator:	No Heater	Winding Thermal 1 Location:	EP
Insulation Class:	B	Winding Thermal 2:	None

Nameplate NP1257L	
CAT.NO.	JSL325A
SPEC.	34M228R049G1
HP	.5
VOLTS	115/230
AMP	6.6/3.3
RPM	3450
FRAME	56Y
SER.F.	1.60
NEMA-NOM-EFF	70
RATING	40C AMB-CONT
CC	USABLE AT 208V 4.4
DE	6203
ENCL	OPEN
SFA	9.2/4.6
CODE	G
DES	-
CL	B
PF	69
HZ	60
PH	1
ODE	6203
SN	

Parts List		
Part Number	Description	Quantity
SA262837	SA 34M228R049G1	1.000 EA
RA249561	RA 34M228R049G1	1.000 EA
TPMRJ30AX	THERMAL 1PH 0.75 AUT 120C	1.000 EA
EC1216A02SP	ELEC CAP, 216-259 MFD, 125V, 1.48D X 3.	1.000 EA
51XB1016A05	10-16X5/16HX WA SL SR TYB (F/S)	1.000 EA
WD1000B16	T&B CX70TN OR L70P TERMINAL LUG	1.000 EA
51XW0832A07	8-32 X .44, TAPTITE II, HEX WSHR SLTD SE	3.000 EA
HA1005A05SP	SLINGER, OD 1.50, ID .659, 203 BRG	1.000 EA
34CB4800SP	CAPACITOR COVER, STAMPED PRIMED	1.000 EA
34GS3001	GASKET, CAPACITOR BOX	1.000 EA
51XB1016A05	10-16X5/16HX WA SL SR TYB (F/S)	2.000 EA
WD4100A01	DP-875 HEYCO PLUG OR 62MP0875 MICRO PLAS	1.000 EA
WD4100A04	62MP0687 HOLE PLUG OR DP-687 HEYCO	1.000 EA
HW5100A03	WAVY WASHER (W1543-017)	1.000 EA
34EP3501A03	ENDPLATE, MACH POOL PUMP 17 FRAME-ASSY/K	1.000 EA
51XN1032A20	10-32 X 1 1/4 HX WS SL SR	2.000 EA
34AD2007	BAFFLE PLATE INJECTION MOLD	1.000 EA
51XW0832A07	8-32 X .44, TAPTITE II, HEX WSHR SLTD SE	4.000 EA
34CB4501SP	TERMINAL BOX LID, STAMPED X (PLATED)	1.000 EA
34GS1018	GASKET, TERM PLATE LID BLACK NEOPRENE	1.000 EA
51XW0832A07	8-32 X .44, TAPTITE II, HEX WSHR SLTD SE	2.000 EA
RM1010A12	.437 I.D. 1" VINYL CAP (SHORT) MOCAP	1.000 EA
LB1009N	LABEL,ROTATION DIRECTION (ON ROLLS)	1.000 EA
MG1000G27	MED CHARCOAL METALLIC GREY 400-0096	0.014 GA

Parts List (continued)		
Part Number	Description	Quantity
85XU0407S04	4X1/4 U DRIVE PIN STAINLESS	2.000 EA
34EP3202A07	FR ENDPLATE, MACH	1.000 EA
HA3100A16	THRUBOLT 10-32 X 8.750	4.000 EA
SP5086A01	34 TERM PANEL SWITCH W/E-BLK & 8-RED	1.000 EA
LC0546	CONNECTION LABEL	1.000 EA
LB1118	LABEL,WARNING (ROLL LABEL)	1.000 EA
MN416A01	TAG-INSTAL-MAINT no wire (1200/bx) 3/19	1.000 EA
NP1257L	ALUM UL CSA CC THERMAL REV MTG	1.000 EA
PK3083	STYROFOAM PACKING CRADLE	1.000 EA
35PA1066	PKG GRP, PRINT PK1008A06	1.000 EA
PK3088	MICROFOAM, 8"X"8 PERF. SHEETS 5,400/RL	1.000 EA

AC Induction Motor Performance Data

Record # 42890 - Typical performance - not guaranteed values

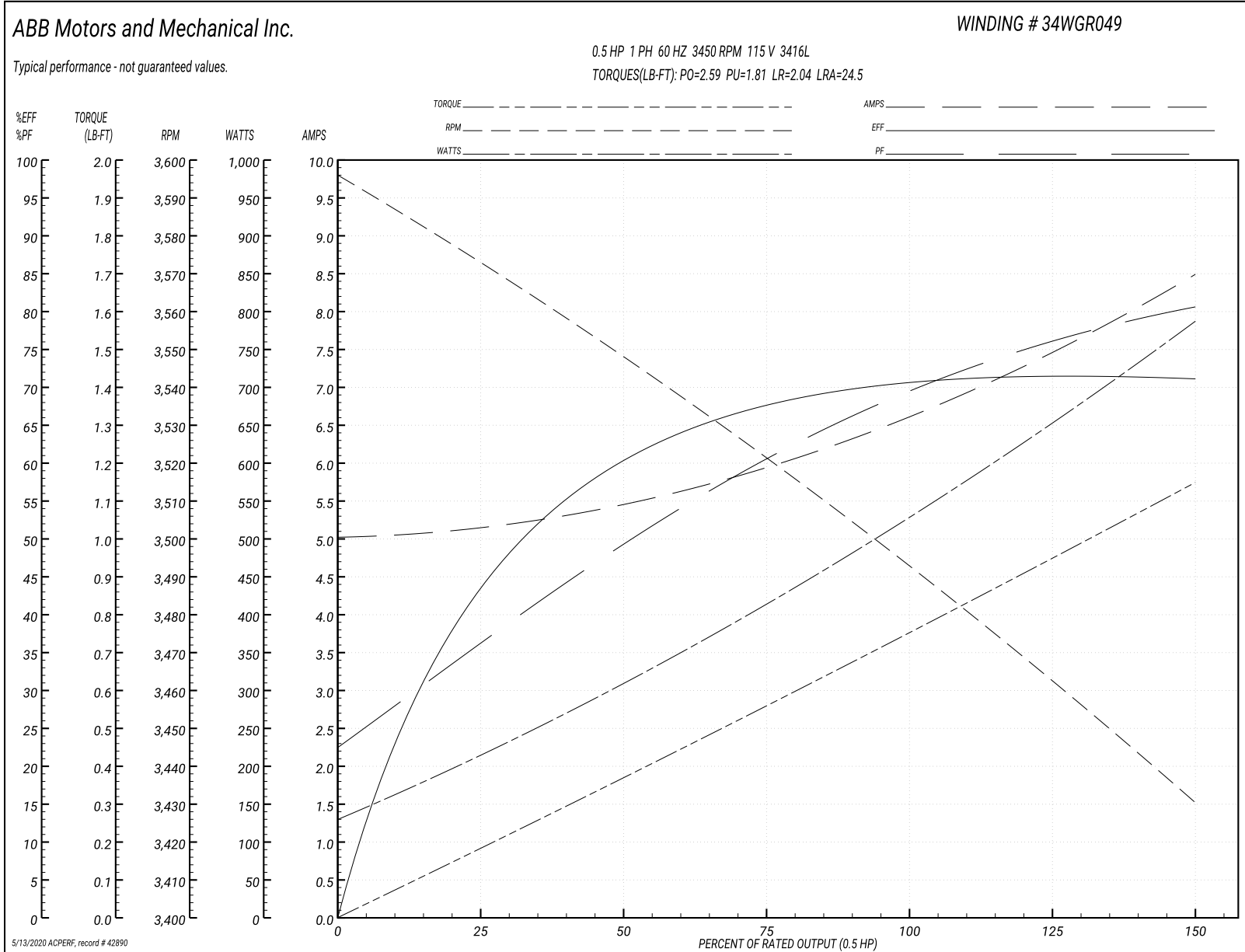
Winding: 34WGR049-R001	Type: 3416L	Enclosure: OPEN
-------------------------------	--------------------	------------------------

Nameplate Data				115 V, 60 Hz: Low Voltage Connection	
Rated Output (HP)	.5			Full Load Torque	0.751 LB-FT
Volts	115/230			Start Configuration	direct on line
Full Load Amps	6.6/3.3			Breakdown Torque	2.59 LB-FT
R.P.M.	3450			Pull-up Torque	1.81 LB-FT
Hz	60	Phase	1	Locked-rotor Torque	2.04 LB-FT
NEMA Design Code	-	KVA Code	G	Starting Current	24.5 A
Service Factor (S.F.)	1.6			No-load Current	5.04 A
NEMA Nom. Eff.	70	Power Factor	69	Line-line Res. @ 25°C	0.87803 Ω A Ph 2.7463 Ω B Ph
Rating - Duty	40C AMB-CONT			Temp. Rise @ Rated Load	26°C
S.F. Amps	9.2/4.6			Temp. Rise @ S.F. Load	43°C

Load Characteristics 115 V, 60 Hz, 0.5 HP

% of Rated Load	25	50	75	100	125	150	S.F.
Power Factor	35	50	61	69	76	81	82
Efficiency	44.8	60.8	67.2	70.3	71.5	71.1	68.7
Speed	3569.3	3545.7	3521.6	3495.4	3464.3	3428.1	3383
Line amperes	5.14	5.41	5.98	6.63	7.47	8.48	9.116

Performance Graph at 115V, 60Hz, 0.5HP Typical performance - Not guaranteed values



AC Induction Motor Performance Data
Record # 52588 - Typical performance - not guaranteed values

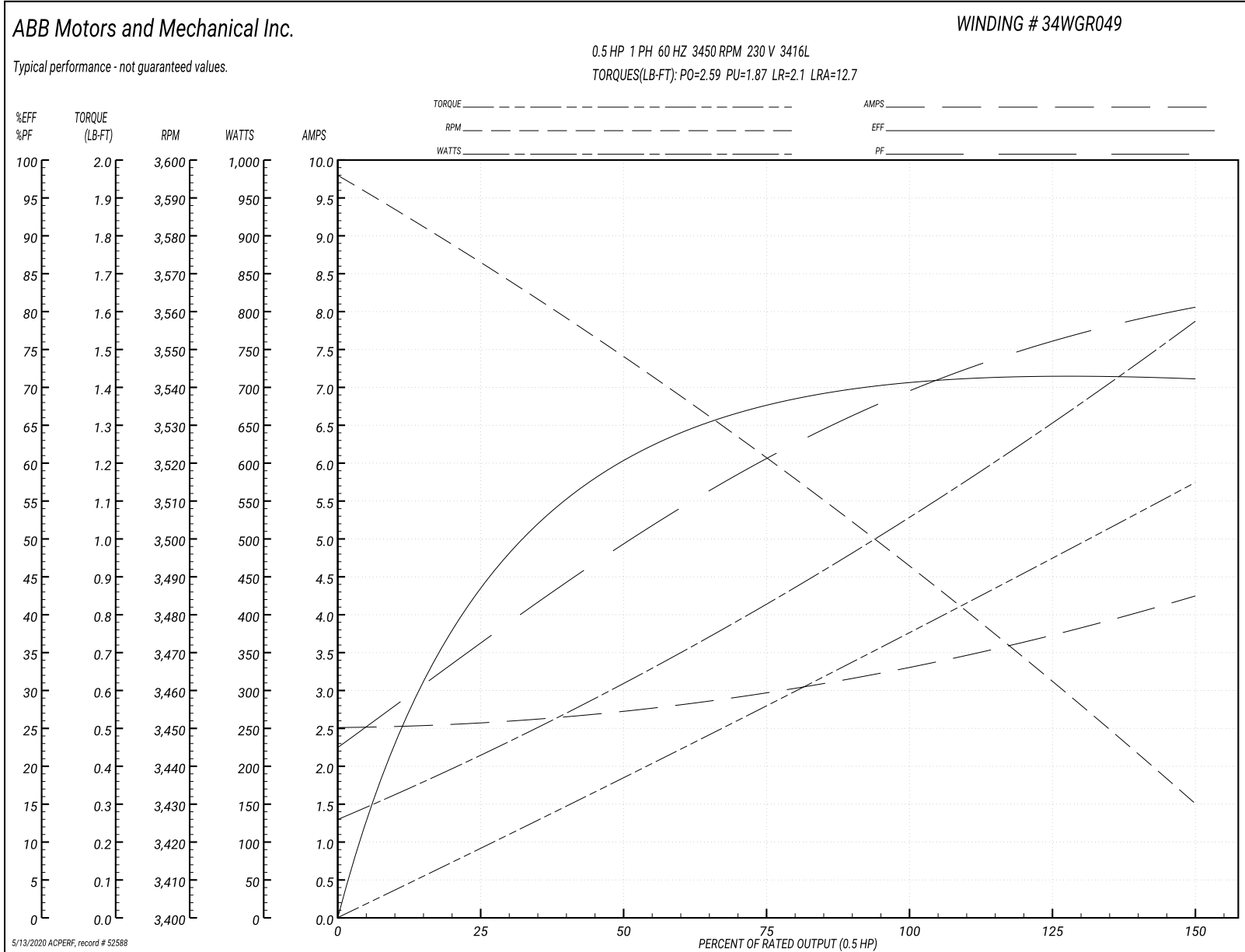
Winding: 34WGR049-R001	Type: 3416L	Enclosure: OPEN
-------------------------------	--------------------	------------------------

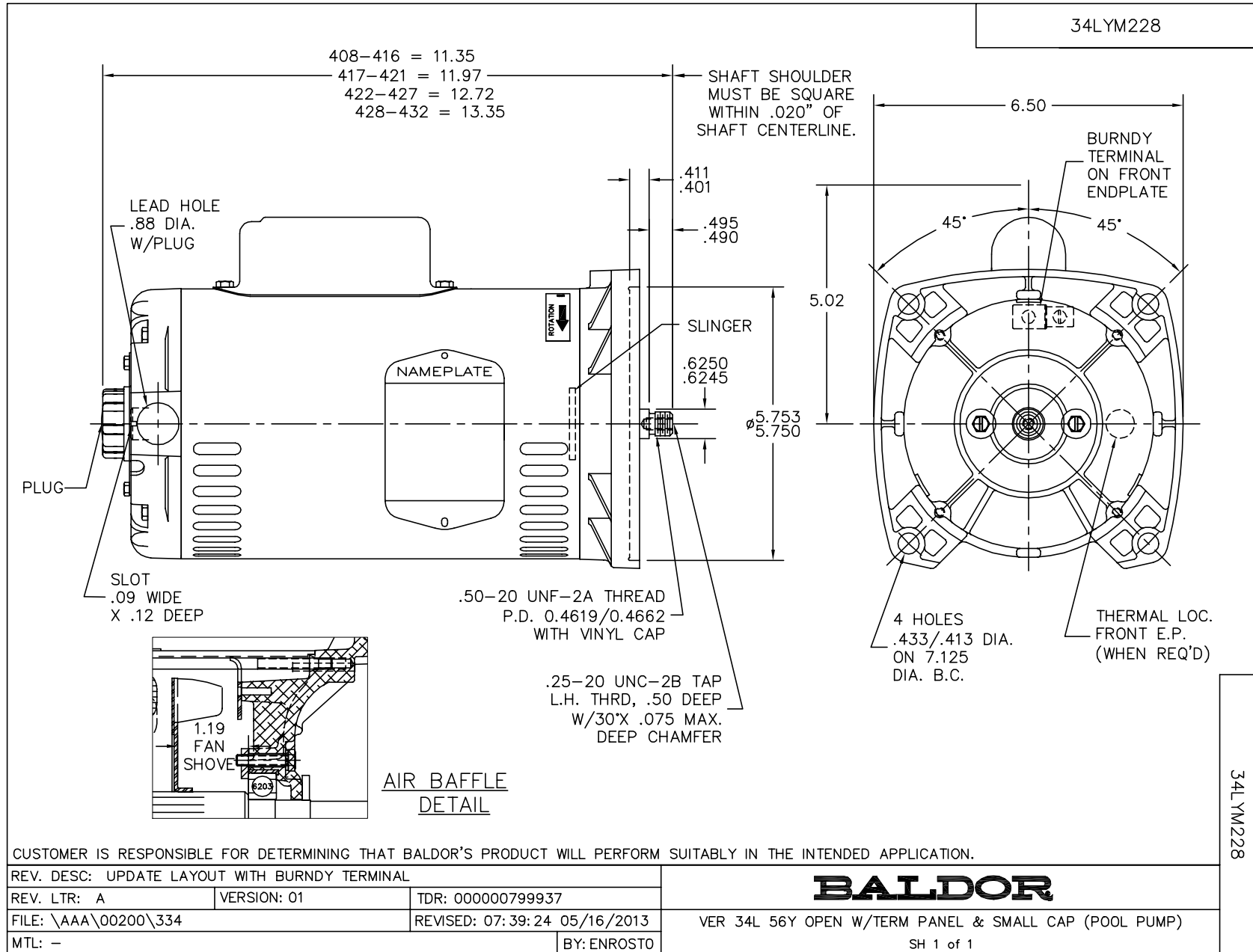
Nameplate Data				230 V, 60 Hz: High Voltage Connection	
Rated Output (HP)	.5			Full Load Torque	0.751 LB-FT
Volts	115/230			Start Configuration	direct on line
Full Load Amps	6.6/3.3			Breakdown Torque	2.59 LB-FT
R.P.M.	3450			Pull-up Torque	1.87 LB-FT
Hz	60	Phase	1	Locked-rotor Torque	2.1 LB-FT
NEMA Design Code	-	KVA Code	G	Starting Current	12.7 A
Service Factor (S.F.)	1.6			No-load Current	2.52 A
NEMA Nom. Eff.	70	Power Factor	69	Line-line Res. @ 25°C	3.388 Ω A Ph 2.78 Ω B Ph
Rating - Duty	40C AMB-CONT			Temp. Rise @ Rated Load	26°C
S.F. Amps	9.2/4.6			Temp. Rise @ S.F. Load	43°C
				Locked-rotor Power Factor	85
				Rotor inertia	0.0148 LB-FT ²

Load Characteristics 230 V, 60 Hz, 0.5 HP

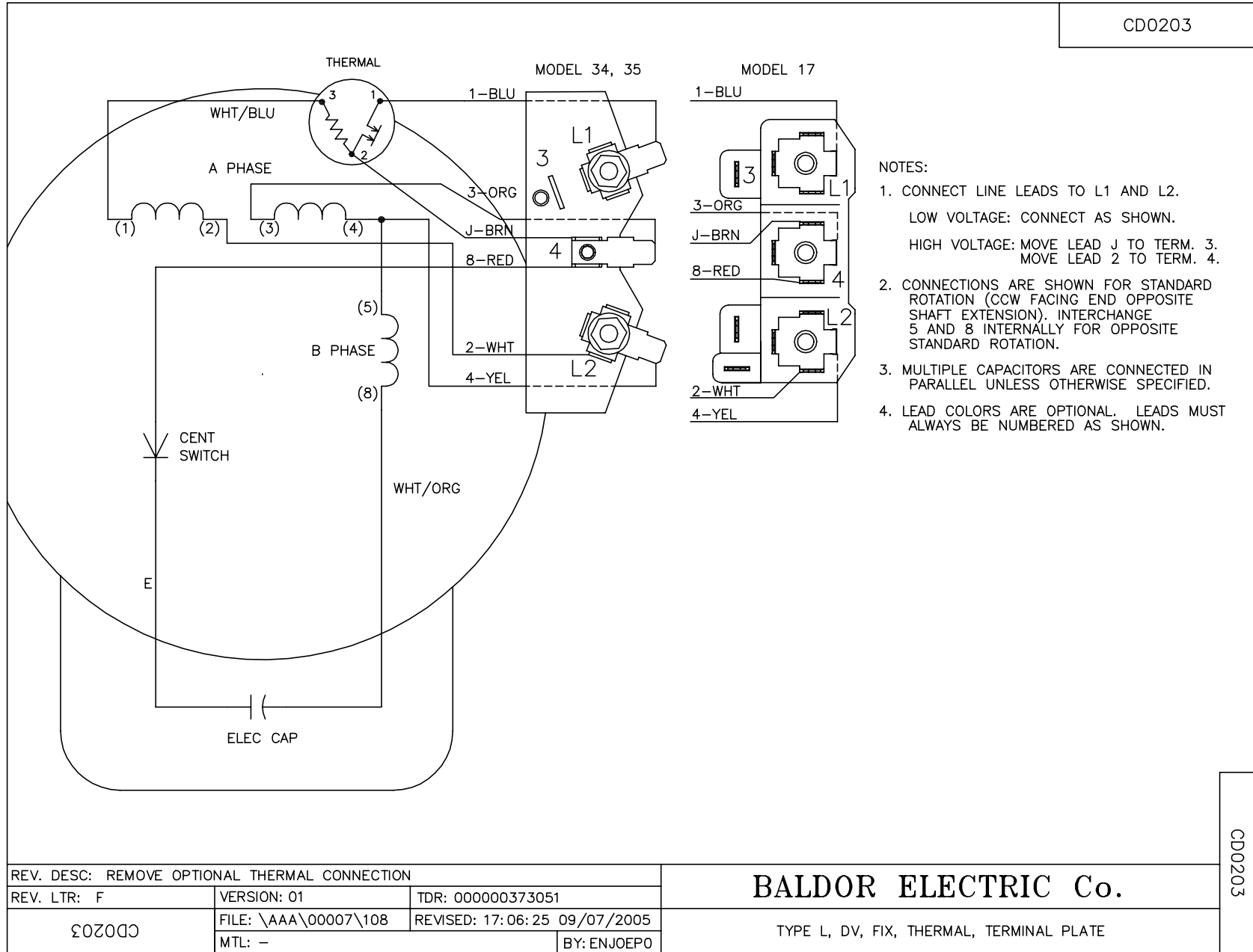
% of Rated Load	25	50	75	100	125	150	S.F.
Power Factor	35	50	61	70	76	81	82
Efficiency	44.9	60.8	67.2	70.4	71.5	71.3	68.7
Speed	3569	3546	3522	3495	3464	3428	3383
Line amperes	2.57	2.7	2.99	3.31	3.74	4.24	4.56

Performance Graph at 230V, 60Hz, 0.5HP Typical performance - Not guaranteed values





CD0203



CD0203

REV. DESC: REMOVE OPTIONAL THERMAL CONNECTION		
REV. LTR: F	VERSION: 01	TDR: 000000373051
CD0203	FILE: \AAA\00007\108	REVISED: 17:06:25 09/07/2005
	MTL: -	BY: ENJOEPO

BALDOR ELECTRIC Co.

TYPE L, DV, FIX, THERMAL, TERMINAL PLATE